

Welcome to
2855 Bloor Street West #204



This Luxurious Kingsway Condominium Is A Designer Show Piece! Facing South, It Has A Spectacular View Of The Gardens From Both The Rare Eat-In Kitchen & Living Room! Professionally Installed 20 Inch Travertine Tile Is Featured Throughout! Granite Counters, Upgraded Cabinets, Custom Sun Shades, Designer Light Fixtures, Crown Moulding, Marble Bathrooms Are Just A Few Of The Many Features This Condo Has To Offer!

For More Information
Please Visit:
www.2855bloor.com

Belinda Mulford

Sales Representative

Office: 416-769-1616

Direct: 416-825-4371

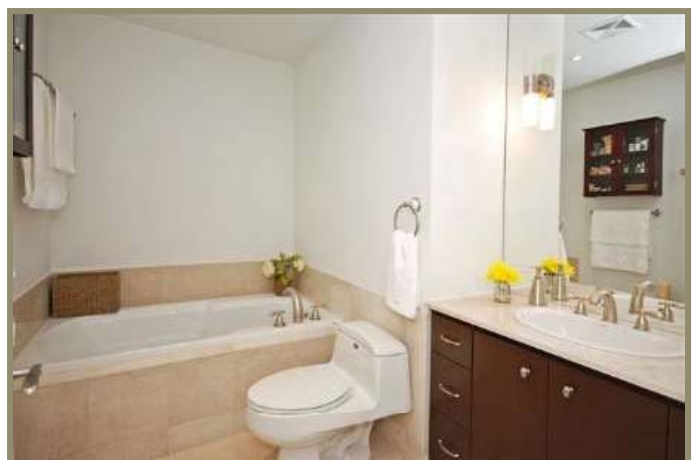


West Realty Inc., Brokerage

1678 Bloor Street West, 4th Floor, Toronto, Ontario M6P 1A9
www.remaxwest.com



2855 Bloor Street West #204



2855 Bloor Street West #204

Living Room: 7.53 x 3.23m Juliette balcony, south view, crown moulding
Kitchen: 4.88 x 2.99m Granite counter, stainless steel appliances, eat-in
Den: 3.35 x 2.77m French doors, crown moulding
Master Bedroom: 4.45 x 3.23m 4-Piece ensuite, walk-in closet, crown moulding

Extras: stainless steel Profile fridge, stove, dishwasher, microwave, washer, dryer, designer light fixtures, custom sunshades, rods & drapery.

Exclusions: dining room light fixture

Taxes: \$2,794.87 (2010)

Possession: To Be Arranged/Flexible

Parking: Underground 2 spaces #73B & #17C

Maintenance Fees: \$683.11 includes water, heat, central air conditioning, building insurance, parking, common elements.

Facilities: games room, guest suites, gym, indoor pool, visitor parking.



Offered At \$519,000

2855 Bloor Street West #204

Extras and Inclusions

Kitchen

Oversized Eat-in Kitchen
Upgraded Cabinetry with Pantry and Extra Cupboards
Granite Counter tops +
Profile Stainless Steel Appliances
Reverse Osmosis Water System
Large Double Sink
Wired for Cable TV/Internet
Valence Lighting
Professionally Installed Travertine Floor, 20 Inch Tiles

Living Room/Dining Room

Crown Moulding Throughout
Large Double French Doors to Juliette Balcony
Designer Light Fixtures
High Baseboards
En-suite Laundry

Den

2 Entrances with French Doors
20 Inch Travertine Tiles
Wired for TV/Internet

Bathrooms

Up-graded Marble Tiling and Cabinetry
Granite Counter Tops
Walk-in Shower and Soaker Tub

Master Bedroom

Large Master Bedroom with Ensuite and Walk-In Closet
Sun Shades and Plantation Wood Blinds
4 Piece Ensuite with Granite Counters and Marble Tiling
Designer Light Fixture
20 inch Travertine Tiles

Of Special Mention

Spectacular South East View Overlooking the Gardens
Oversized Travertine Floors Throughout (20 inch Tiles)
Custom sun Shades Wood Wind Blinds and Rods
2 Large Lockers Level A (5x10) Main Level (5x6)
2 Parking Spots (level 2, #73) Level 3 (c) #17
Guest Suite within the Building
Fabulous Amenities and Gorgeous Gardens
24 Hour Concierge
Visitor Parking
Reverse Osmosis Water System